

Applications of the TC62X Solid-State Temperature Sensors

Author: *Wes Freeman*
Microchip Technology Inc.

INTRODUCTION

Sensing temperature and comparing that temperature to preset limits is the basis for a variety of problems that designers face in system design and process control. Conventional temperature sensing solutions, such as thermocouples and RTDs, require additional electronic components to linearize and amplify their low-level outputs. Since electronic components are already in the circuit, semiconductor manufacturers have begun adding temperature sensing functions to their amplifier and reference circuits. The result has been a new generation of small, easy-to-use temperature sensing products.

Electronic thermal sensors typically generate a voltage that is proportional to absolute temperature (PTAT). This voltage is then compared to a reference voltage to test the temperature limit. A new temperature sensor has been developed, however, that does not require a PTAT voltage. The new sensor provides two set points plus a control flip-flop with only three components. The same technique has also produced a single-set point sensor in a 3-pin package.

Figure 1 is a block diagram of the dual set point TC620 from Microchip Technology. This device combines a temperature-dependent element, voltage reference, two comparators, control flip-flop and push-pull digital outputs in a single CMOS integrated circuit. Set point temperatures are selected with external resistors. The temperature-dependent element is a Positive Temperature Coefficient (PTC) resistor.

The circuit does not generate a PTAT voltage. Instead, a reference amplifier forces 1.2V across the on-chip PTC. As temperature increases, the PTC resistance increases while the current decreases. The PTC current is compared to current flowing through the external set point resistors. If the PTC current falls below a set point current, that set point output will go to a logic-high state. Two comparators provide low and high set points in a single 8-pin DIP or Small Outline (SO) surface mount package.

The control flip-flop is set when the temperature exceeds the high limit and reset when the temperature goes below the low limit (Figure 2). The control output is available with two polarity options: a 'C', or Cool,

option (i.e. to turn on a fan at the high limit) and an 'H', or Heat, option (i.e. to keep a heater on until the high limit is reached).

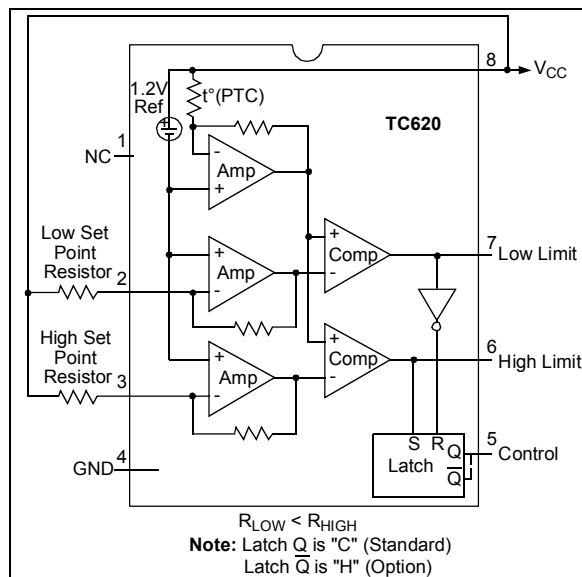


FIGURE 1: Block Diagram of the TC620 Temperature Sensor.

TC620 set point resistors are selected from a graph (Figure 3) or calculated from the equation:

EQUATION

$$R = 0.5997 \times T^{2.1312}$$

Where: *R* is in Ohms and *T* is in Kelvin

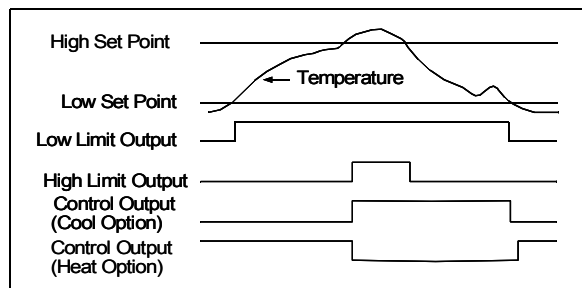


FIGURE 2: TC620 Temperature vs. Output Logic.

AN762

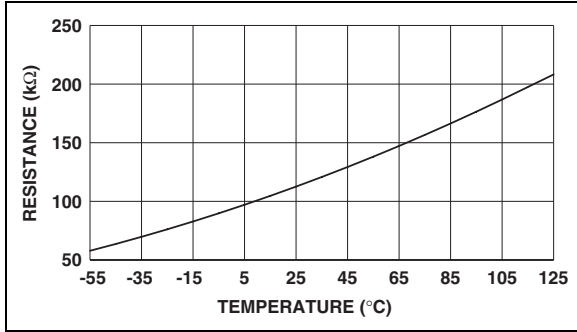


FIGURE 3: TC620 Sense Resistance vs. Temperature.

While the TC621 is similar to the TC620, it senses temperature via an external Negative Temperature Coefficient (NTC) thermistor instead of an on-chip sensor. Thermistors are available in a wide variety of package options for special design requirements, such as chips for rapid thermal response and metal sheaths for corrosion resistance.

For high volume applications, a single set point device is available. The trip point of the TC622 and TC624 is set by a single external resistor.

Hysteresis is very important for controlling chatter, or “motorboating”, in control systems. Semiconductor sensors provide low, repeatable hysteresis when compared with bimetallic thermal switches. The TC620 control output provides programmable hysteresis, which is equal to the difference between the high and low set points. There is also about 2°C of hysteresis at each set point. The single set point of the TC622 and TC624 has fixed hysteresis of 2°C.

The push-pull outputs of the TC62X series sensors connect directly to digital logic or microcontroller inputs (see Figure 4). Output current is limited to 1 mA for the TC620 so that self-heating will not introduce unwanted hysteresis. Output current is easily boosted to drive larger loads. Examples of driving DC and AC loads are shown in Figure 5A, Figure 5B and Figure 5C.

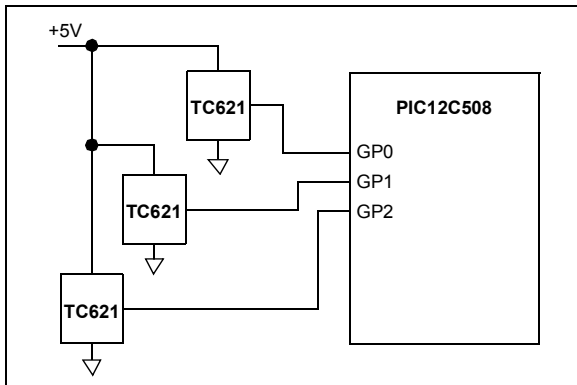


FIGURE 4: Direct Interface to a Microcontroller.

Three state outputs (low, high and off) are useful for minimizing wiring costs in control applications. The TC620 can be combined with an external CMOS buffer to provide three output states on a single line (Figure 6). Below the low set point temperature, the output will be in the high-impedance (off) state. When the low limit is exceeded, the output will switch to a low-impedance state and force a logic low. The output goes high if the high limit is exceeded.

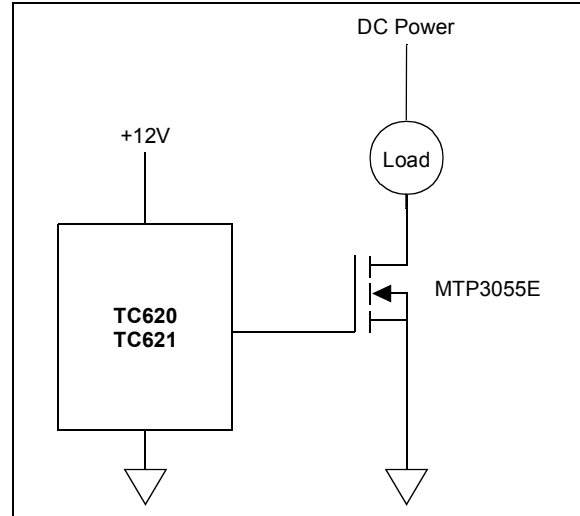


FIGURE 5A: Boosting Output Drive Current.

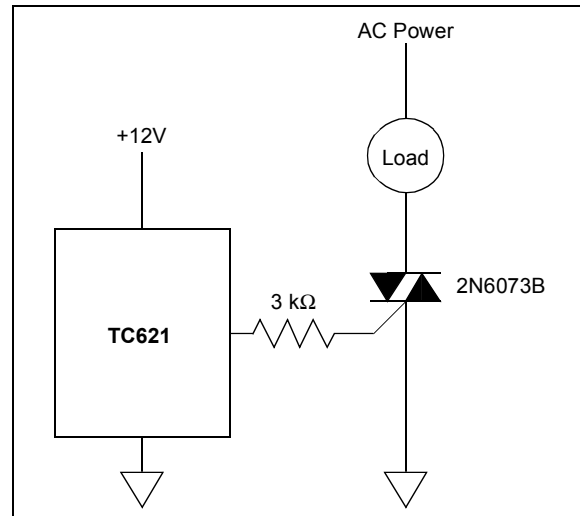


FIGURE 5B: Boosting Output Drive Current.

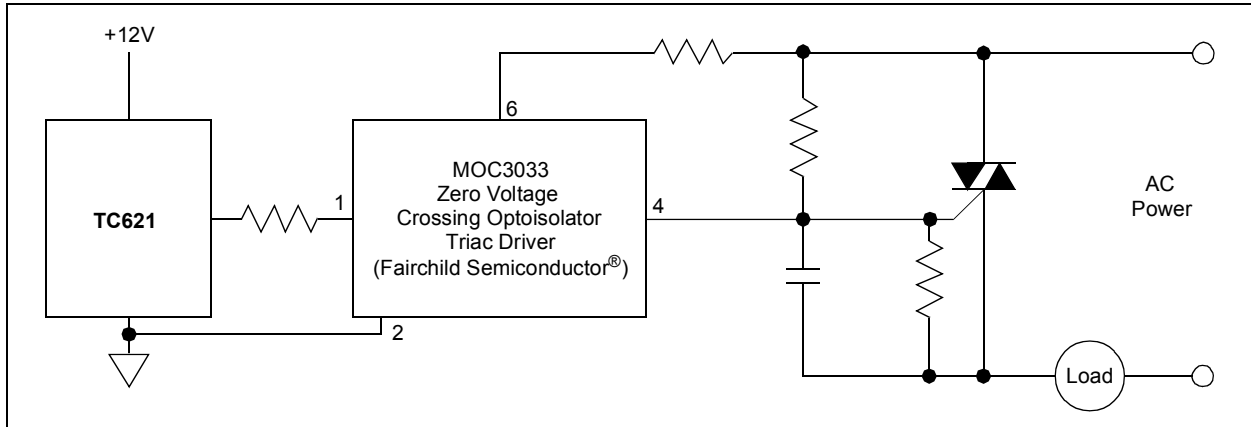


FIGURE 5C: Boosting Output Drive Current.

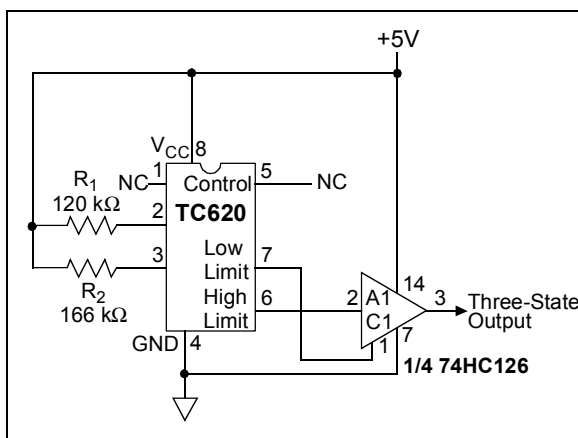


FIGURE 6: Boosting Output Drive Current.

PROTECTING ELECTRONIC COMPONENTS AND SYSTEMS

Thermal protection of sensitive components becomes critical as system designers are asked to pack more functions, operating at higher speeds, into smaller packages. For example, the Intel® Pentium® processor dissipates up to 16 watts at 66 MHz and will be damaged if the cooling system fails. High ambient temperatures can also degrade performance or damage components in communications systems, file servers, power supplies, motor drives and other applications where heat is generated. These components and systems are easily protected with semiconductor temperature sensors because the sensor operating characteristics and packaging are compatible with the components being protected.

Proper mounting of the temperature sensor in relationship to the heat source is critical to ensure correct results. Therefore, it is important to select the correct package for a particular task. For example, protecting a microprocessor, such as Intel's Pentium, is simplified when a TC620 in SO package is mounted underneath the microprocessor's pin grid array (PGA) package

(Figure 7). The two set points let designers offer a 'graceful' shut down procedure: if the low set point temperature is exceeded, unnecessary peripherals can be shut down, files backed up, and a system warning generated. If the high set point is exceeded the system is shut down to prevent damage to the CPU.

Protecting power transistors, diodes, etc. is easy when the TC622 in a TO-220 package is used (Figure 7). The tab of the TC622 package is internally connected to V_{CC} , so an insulating washer may be required, if the heat sink is at a voltage potential beyond the TC622's V_{CC} range of 4.5V to 18V.

Measuring the internal air temperature inside a system is accomplished using the DIP, small outline (SO) or TO-220 packages. Since the sensor is mounted in the same type of package as other ICs, and is at the PC board level, the sensor's output will accurately reflect the actual environment of components within the system. For measuring specific hot spots on sensitive components, the TC621 offers a wide variety of options when combined with an almost infinite selection of thermistor packaging types.

Sensing that a component is too hot is not sufficient protection, however. Further action, such as turning on a cooling fan, is required. The TC622 or TC624, combined with a switching transistor, will turn on a fan at the preprogrammed temperature (Figure 8). Keeping the fan turned off until cooling is required produces several advantages. Reliability is improved because the amount of time that the fan must run is reduced. In addition, efficiency is improved and noise is reduced.

Even turning on a cooling fan is not enough to ensure protection, however. For example, equipment can still be damaged if the fan fails or air intake vents are blocked. If additional protection is required, the TC620 will control a fan and provide a warning of thermal runaway (Figure 9). The circuit of Figure 9 will turn on the fan at +45°C and give an over-temperature warning at +85°C. The entire circuit operates from a single +5V power supply, so the over-temperature warning is

AN762

CMOS/TTL compatible. Also, supply current is only about 140 μA when the fan is off, which makes the circuit ideal for battery-powered equipment.

As previously mentioned, semiconductor thermal sensors offer low and repeatable hysteresis when compared with bimetallic devices. Low hysteresis is very important in protecting critical electronic systems that must be restarted as soon as possible, such as a file server. Since the system will normally attempt a restart operation as soon as the temperature returns to an acceptable level, minimum hysteresis equates to minimum time before the system can return to service.

HEATING/COOLING CONTROL

The control output of the TC620 or TC621, either by itself or combined with the low and high set points, forms a simple but flexible temperature controller for environmental and process control. Heating, cooling or combined heating/cooling options are available with one IC, which reduces design and prototyping time.

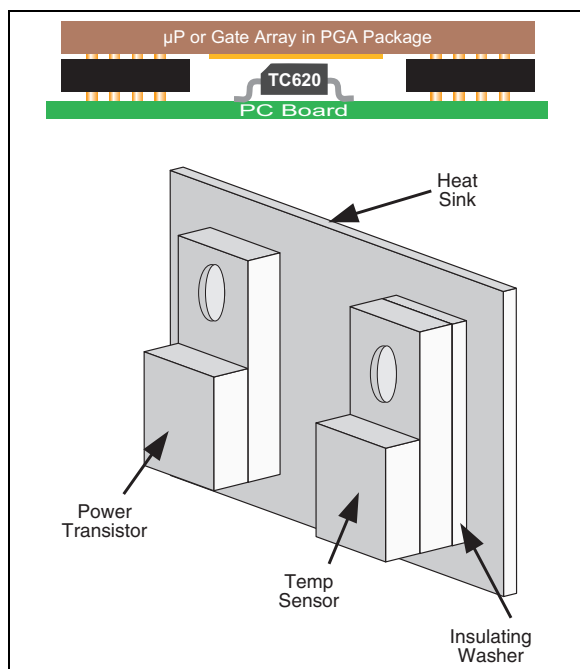


FIGURE 7: Mounting the temperature sensor to protect sensitive components.

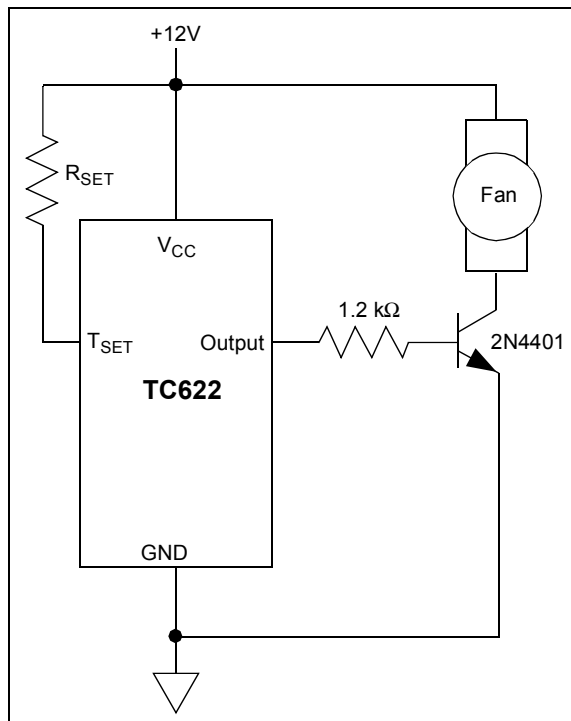


FIGURE 8: Temperature Controlled Fan.

Since temperatures are selected with external resistors, stocking one device provides the designer with temperature control over a range of -50°C to $+120^{\circ}\text{C}$.

Figure 10 is an example of a swimming pool solar heating panel pump control. This circuit uses an external thermistor that is attached to the solar panel in a manner that will allow it to sense heat generated by direct exposure to the sun. A thermistor with a resistance of about 100 k Ω at 25 $^{\circ}\text{C}$ should be selected. One such thermistor is the ACW-027 from Ketema[®], which can be clamped around a pipe in the solar panel.

This circuit will energize the pump when the sun is heating the panels and turn off the pump when the sky is cloudy or the sun goes down. To prevent rapid cycling of the pump during partly cloudy conditions, the hysteresis is set for a relatively wide (20 $^{\circ}\text{F}$) span. Providing a low thermal impedance between the thermistor assembly and the solar panel will also prevent rapid pump cycling by adding the solar panel's thermal time constant to the hysteresis.

To select the set point resistors, consult the thermistor data sheet for the thermistor's value at the desired temperature. For example, assume that we want the pump to turn on (high set point) at 100 $^{\circ}\text{F}$ and turn off (low set point) at 80 $^{\circ}\text{F}$. For the Ketema ACW-027, the resistance is 55.7 k Ω at +100 $^{\circ}\text{F}$ and 91.1 k Ω at +80 $^{\circ}\text{F}$. These values are the high and low set point resistors, respectively.

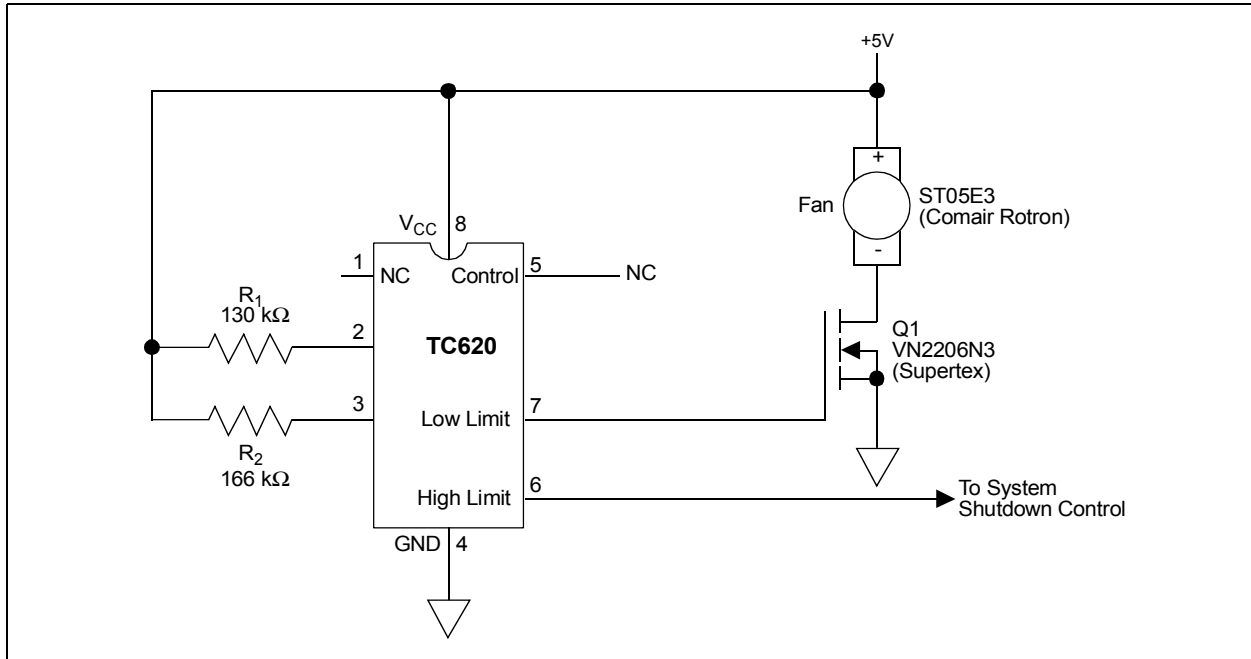


FIGURE 9: Temperature-controlled fan with fail-safe warning.

As the sun heats the solar panel and the thermistor assembly, the pump will turn on at +100°F. The pump will stay on until the temperature decreases to +80°F. This ensures that the solar panel has time to heat up before the pump is energized, and that the pump will turn off before the solar panel has cooled below the pool temperature.

Many heating and cooling systems operate from a 24 VAC secondary voltage. Figure 11 is an example of a temperature control system that drives 24 VAC relays and operates from an internally-generated +15V power supply.

The controller is designed to regulate temperature over a +45°F to +85°F (+7°C to +29°C) range, with hysteresis of 5°F. Selection of the resistors is as follows:

The low limit is +7°C, so:

EQUATION

$$R_{LOTEMP} = .5997 \times (7 + 273.15)^{2.1312} = 98.6 \text{ k}\Omega$$

The high limit is +29°C, so:

EQUATION

$$R_{HITEMP} = .5997 \times (29 + 273.15)^{2.1312} = 115.8 \text{ k}\Omega$$

Temperature adjustment is controlled by potentiometer R_1 . Since current flows through R_1 to both pins 2 and 3, the effect of a change in R_1 is twice as great as a change in R_{LOTEMP} or R_{HITEMP} .

Therefore, to provide an adjustment range of 40°F,

EQUATION

$$R_1 = \frac{(R_{HITEMP} - R_{LOTEMP})}{2} = \frac{(115.8 - 98.6)}{2} = 8.6 \text{ k}\Omega$$

The nearest standard-value component is a 10 kΩ potentiometer, so the high set point resistor will vary from R_{LOTEMP} (98.6 kΩ or 45°F) to $R_{LOTEMP} + 2 \cdot R_1$ (98.6 kΩ + 20 kΩ or 90°F).

Hysteresis is set by the difference between the high and low set points. The slope of the TC620's internal PTC resistor is about 430 Ω/°F, so 5°F of hysteresis occurs when the low set point resistor is about 2.15 kΩ less than the high set point resistor. Combining these values, and adjusting for standard 1% resistor values, we get:

EQUATION

$$R_{LOSET} = 98.6 \text{ k}\Omega - 2.15 \text{ k}\Omega = 96.45 \text{ k}\Omega = 95.3 \text{ k}\Omega$$

$$R_{HISET} = 98.6 \text{ k}\Omega = 97.6 \text{ k}\Omega$$

With R_1 attached to both programming resistors, the low set point resistor's 5°F hysteresis will track the high set point resistor as the user manually adjusts R_1 for different temperatures.

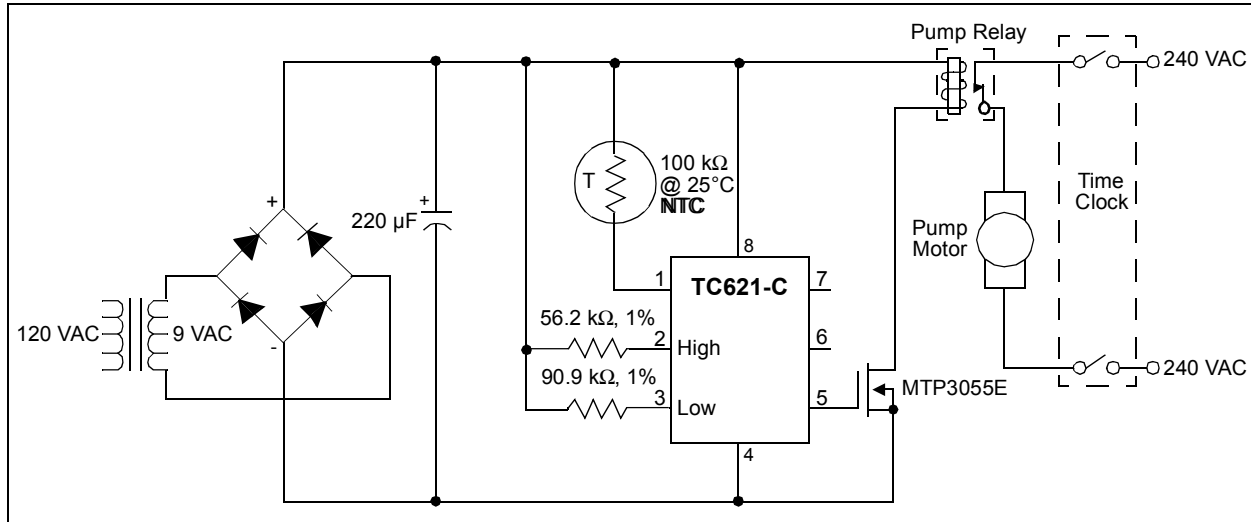


FIGURE 10: Swimming Pool Solar Heat Control.

The circuit of Figure 11 uses a TC4469 quad CMOS driver to add logic functions to the TC620 outputs. The first driver is used to drive an LED indicator. Depending on the position of the Heat/Cool selector switch, either the Heat or Cool LED will be lit. The second driver controls the “Comfort Zone” LED indicator. When the temperature is between the two set points (i.e. in the 5°F hysteresis zone) this indicator is turned on.

The third driver controls the heating contactor. It is enabled when the Heat/Cool selector switch is in the Heat mode (i.e. open) and the control output is low. When the Heat/Cool switch is closed, the third driver is disabled and the fourth driver is enabled to control the cooling contactor. This driver turns on the cooling contactor when the TC620’s control output is high. The logic function of the TC4469 is used to prevent the heating and cooling contactors from operating simultaneously.

Power for the control system is derived from the 24 VAC supply. The TC620 and TC4469 are both CMOS products, so supply current (except for the LED current) is very low. Using triac switches to energize the relays keeps component costs to a minimum while maintaining high reliability.

ACKNOWLEDGEMENT

The author wishes to thank Scott Sangster for his contributions to this article.

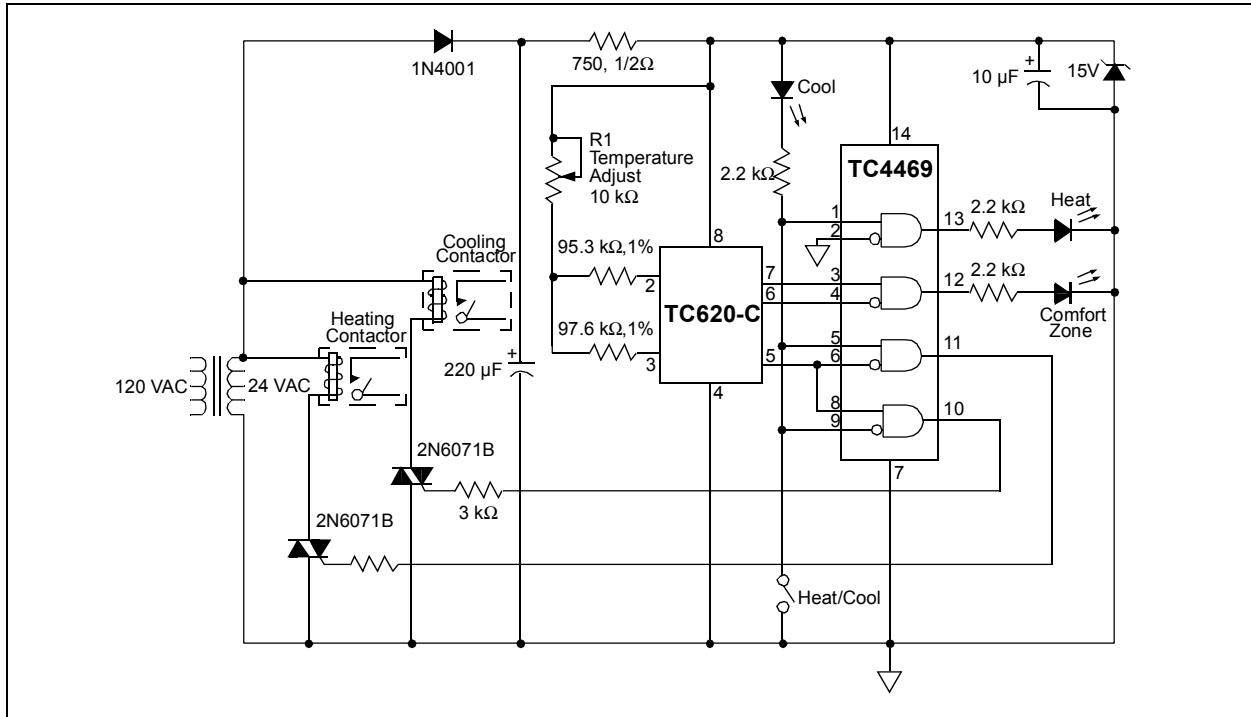


FIGURE 11: Swimming Pool Solar Heat Control.

AN762

NOTES:

Note the following details of the code protection feature on Microchip devices:

- Microchip products meet the specification contained in their particular Microchip Data Sheet.
- Microchip believes that its family of products is one of the most secure families of its kind on the market today, when used in the intended manner and under normal conditions.
- There are dishonest and possibly illegal methods used to breach the code protection feature. All of these methods, to our knowledge, require using the Microchip products in a manner outside the operating specifications contained in Microchip's Data Sheets. Most likely, the person doing so is engaged in theft of intellectual property.
- Microchip is willing to work with the customer who is concerned about the integrity of their code.
- Neither Microchip nor any other semiconductor manufacturer can guarantee the security of their code. Code protection does not mean that we are guaranteeing the product as "unbreakable."

Code protection is constantly evolving. We at Microchip are committed to continuously improving the code protection features of our products.

Information contained in this publication regarding device applications and the like is intended through suggestion only and may be superseded by updates. It is your responsibility to ensure that your application meets with your specifications. No representation or warranty is given and no liability is assumed by Microchip Technology Incorporated with respect to the accuracy or use of such information, or infringement of patents or other intellectual property rights arising from such use or otherwise. Use of Microchip's products as critical components in life support systems is not authorized except with express written approval by Microchip. No licenses are conveyed, implicitly or otherwise, under any intellectual property rights.

Trademarks

The Microchip name and logo, the Microchip logo, KEELOQ, MPLAB, PIC, PICmicro, PICSTART, PRO MATE and PowerSmart are registered trademarks of Microchip Technology Incorporated in the U.S.A. and other countries.


FilterLab, microID, MXDEV, MXLAB, PICMASTER, SEEVAL and The Embedded Control Solutions Company are registered trademarks of Microchip Technology Incorporated in the U.S.A.

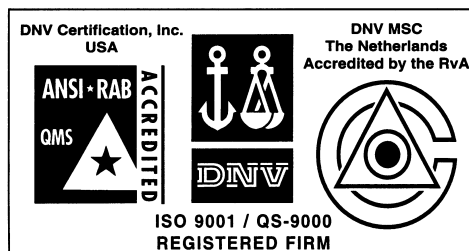
Accuron, dsPIC, dsPICDEM.net, ECONOMONITOR, FanSense, FlexROM, fuzzyLAB, In-Circuit Serial Programming, ICSP, ICEPIC, microPort, Migratable Memory, MPASM, MPLIB, MPLINK, MPSIM, PICC, PICKit, PICDEM, PICDEM.net, PowerCal, PowerInfo, PowerTool, rfPIC, Select Mode, SmartSensor, SmartShunt, SmartTel and Total Endurance are trademarks of Microchip Technology Incorporated in the U.S.A. and other countries.

Serialized Quick Turn Programming (SQTP) is a service mark of Microchip Technology Incorporated in the U.S.A.

All other trademarks mentioned herein are property of their respective companies.

© 2003, Microchip Technology Incorporated, Printed in the U.S.A., All Rights Reserved.

 Printed on recycled paper.



Microchip received QS-9000 quality system certification for its worldwide headquarters, design and wafer fabrication facilities in Chandler and Tempe, Arizona in July 1999 and Mountain View, California in March 2002. The Company's quality system processes and procedures are QS-9000 compliant for its PICmicro® 8-bit MCUs, KEELOQ® code hopping devices, Serial EEPROMs, microperipherals, non-volatile memory and analog products. In addition, Microchip's quality system for the design and manufacture of development systems is ISO 9001 certified.



MICROCHIP

WORLDWIDE SALES AND SERVICE

AMERICAS

Corporate Office

2355 West Chandler Blvd.
Chandler, AZ 85224-6199
Tel: 480-792-7200 Fax: 480-792-7277
Technical Support: 480-792-7627
Web Address: <http://www.microchip.com>

Rocky Mountain

2355 West Chandler Blvd.
Chandler, AZ 85224-6199
Tel: 480-792-7966 Fax: 480-792-4338

Atlanta

3780 Mansell Road, Suite 130
Alpharetta, GA 30022
Tel: 770-640-0034 Fax: 770-640-0307

Boston

2 Lan Drive, Suite 120
Westford, MA 01886
Tel: 978-692-3848 Fax: 978-692-3821

Chicago

333 Pierce Road, Suite 180
Itasca, IL 60143
Tel: 630-285-0071 Fax: 630-285-0075

Dallas

4570 Westgrove Drive, Suite 160
Addison, TX 75001
Tel: 972-818-7423 Fax: 972-818-2924

Detroit

Tri-Atria Office Building
32255 Northwestern Highway, Suite 190
Farmington Hills, MI 48334
Tel: 248-538-2250 Fax: 248-538-2260

Kokomo

2767 S. Albright Road
Kokomo, Indiana 46902
Tel: 765-864-8360 Fax: 765-864-8387

Los Angeles

18201 Von Karman, Suite 1090
Irvine, CA 92612
Tel: 949-263-1888 Fax: 949-263-1338

San Jose

Microchip Technology Inc.
2107 North First Street, Suite 590
San Jose, CA 95131
Tel: 408-436-7950 Fax: 408-436-7955

Toronto

6285 Northam Drive, Suite 108
Mississauga, Ontario L4V 1X5, Canada
Tel: 905-673-0699 Fax: 905-673-6509

ASIA/PACIFIC

Australia

Microchip Technology Australia Pty Ltd
Suite 22, 41 Rawson Street
Epping 2121, NSW
Australia
Tel: 61-2-9868-6733 Fax: 61-2-9868-6755

China - Beijing

Microchip Technology Consulting (Shanghai)
Co., Ltd., Beijing Liaison Office
Unit 915
Bei Hai Wan Tai Bldg.
No. 6 Chaoyangmen Beidajie
Beijing, 100027, No. China
Tel: 86-10-85282100 Fax: 86-10-85282104

China - Chengdu

Microchip Technology Consulting (Shanghai)
Co., Ltd., Chengdu Liaison Office
Rm. 2401-2402, 24th Floor,
Ming Xing Financial Tower
No. 88 TIDU Street
Chengdu 610016, China
Tel: 86-28-86766200 Fax: 86-28-86766599

China - Fuzhou

Microchip Technology Consulting (Shanghai)
Co., Ltd., Fuzhou Liaison Office
Unit 28F, World Trade Plaza
No. 71 Wusi Road
Fuzhou 350001, China
Tel: 86-591-7503506 Fax: 86-591-7503521

China - Hong Kong SAR

Microchip Technology Hongkong Ltd.
Unit 901-6, Tower 2, Metroplaza
223 Hing Fong Road
Kwai Fong, N.T., Hong Kong
Tel: 852-2401-1200 Fax: 852-2401-3431

China - Shanghai

Microchip Technology Consulting (Shanghai)
Co., Ltd.
Room 701, Bldg. B
Far East International Plaza
No. 317 Xian Xia Road
Shanghai, 200051
Tel: 86-21-6275-5700 Fax: 86-21-6275-5060

China - Shenzhen

Microchip Technology Consulting (Shanghai)
Co., Ltd., Shenzhen Liaison Office
Rm. 1812, 18/F, Building A, United Plaza
No. 5022 Binhe Road, Futian District
Shenzhen 518033, China
Tel: 86-755-82901380 Fax: 86-755-82966626

China - Qingdao

Rm. B503, Fullhope Plaza,
No. 12 Hong Kong Central Rd.
Qingdao 266071, China
Tel: 86-532-5027355 Fax: 86-532-5027205

India

Microchip Technology Inc.
India Liaison Office
Divyasree Chambers
1 Floor, Wing A (A3/A4)
No. 11, O'Shaughnessey Road
Bangalore, 560 025, India
Tel: 91-80-2290061 Fax: 91-80-2290062

Japan

Microchip Technology Japan K.K.
Benex S-1 6F
3-18-20, Shinyokohama
Kohoku-Ku, Yokohama-shi
Kanagawa, 222-0033, Japan
Tel: 81-45-471-6166 Fax: 81-45-471-6122

Korea

Microchip Technology Korea
168-1, Youngbo Bldg. 3 Floor
Samsung-Dong, Kangnam-Ku
Seoul, Korea 135-882
Tel: 82-2-554-7200 Fax: 82-2-558-5934

Singapore

Microchip Technology Singapore Pte Ltd.
200 Middle Road
#07-02 Prime Centre
Singapore, 188980
Tel: 65-6334-8870 Fax: 65-6334-8850

Taiwan

Microchip Technology (Barbados) Inc.,
Taiwan Branch
11F-3, No. 207
Tung Hua North Road
Taipei, 105, Taiwan
Tel: 886-2-2717-7175 Fax: 886-2-2545-0139

EUROPE

Austria

Microchip Technology Austria GmbH
Durisolstrasse 2
A-4600 Wels
Austria
Tel: 43-7242-2244-399
Fax: 43-7242-2244-393

Denmark

Microchip Technology Nordic ApS
Regus Business Centre
Lautrup høj 1-3
Ballerup DK-2750 Denmark
Tel: 45 4420 9895 Fax: 45 4420 9910

France

Microchip Technology SARL
Parc d'Activite du Moulin de Massy
43 Rue du Saule Trapu
Batiment A - 1er Etage
91300 Massy, France
Tel: 33-1-69-53-63-20 Fax: 33-1-69-30-90-79

Germany

Microchip Technology GmbH
Steinheilstrasse 10
D-85737 Ismaning, Germany
Tel: 49-89-627-144 0 Fax: 49-89-627-144-44

Italy

Microchip Technology SRL
Centro Direzionale Colleoni
Palazzo Taurus 1 V. Le Colleoni 1
20041 Agrate Brianza
Milan, Italy
Tel: 39-039-65791-1 Fax: 39-039-6899883

United Kingdom

Microchip Ltd.
505 Eskdale Road
Winnesh Triangle
Wokingham
Berkshire, England RG41 5TU
Tel: 44 118 921 5869 Fax: 44-118 921-5820

12/05/02