



AN1465

Digitally Addressable Lighting Interface (DALI) Communication

*Author: Shaima Husain
Microchip Technology Inc.*

The Digitally Addressable Lighting Interface (DALI) has emerged as a standard in Europe to address growing power issues, mostly for commercial and industrial purposes. DALI is part of the IEC 60929 specification, and relates specifically to digitally controlled dimmable fluorescent ballasts. DALI type ballasts can run at lower power levels than standard magnetic ballasts. Commercial development of DALI started around 1998. DALI consists of a two-wire serial bus and requires a special DALI power supply. The Master sends 16-bit Manchester encoded data packets, and the ballasts can respond with an 8-bit Manchester encoded data packet. Multi-Masters are allowed, and two Masters can share the same ballast. There are 64 channels, or individual addresses, available for the ballasts to be connected to one interface line. Each DALI bus can have 16 groups at the maximum, and there are 16 scenes available. There is no error checking in the DALI protocol. This application note describes the basic communication between the control device and the control gear, which includes explanation of electrical specifications, timing, packet formats and Manchester encoding/decoding.

TERMINOLOGY

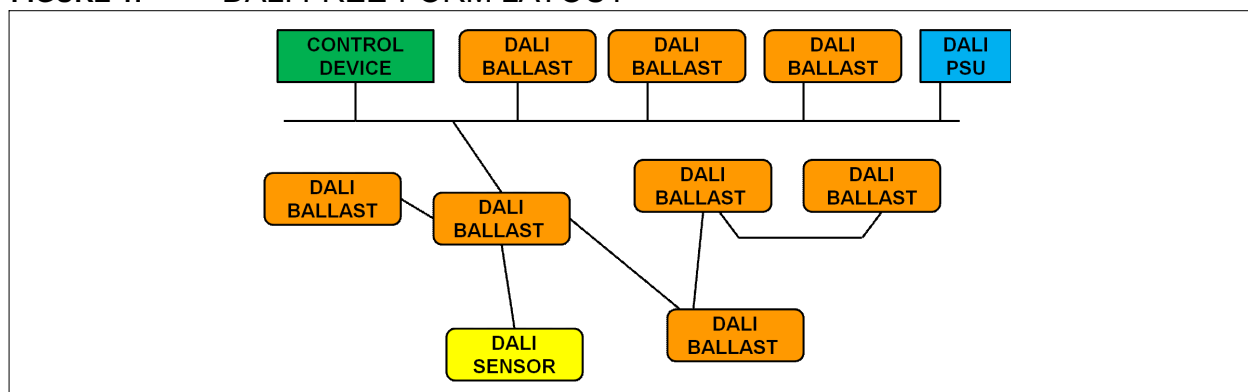
- **Control Gear:** Ballast or Sensor/Receiver
- **Control Device:** Controller/Transmitter
- **Forward Frame:** Packet sent from the control device to the control gear
- **Backward Frame:** Response packet sent from the control gear to the control device
- **Short Address:** Address of an individual control gear in the system
- **Group Address:** Address to a group of control gear
- **Broadcast:** Address used to address all the control gears at once
- **Direct Arc Power:** Power level sent to an individual ballast or sent as a broadcast to all control gear, to immediately set the lamps to that power level

PHYSICAL LAYER

Topology

Unlike analog systems, DALI does not require any hard-wired power circuit control groups. The combination of individual ballast addressing with digital switching eliminates vertical switch wiring. DALI has a free-form layout (Figure 1). Daisy chain, star topology and multi-drop are all allowed. A combination of two or more topologies is also allowed.

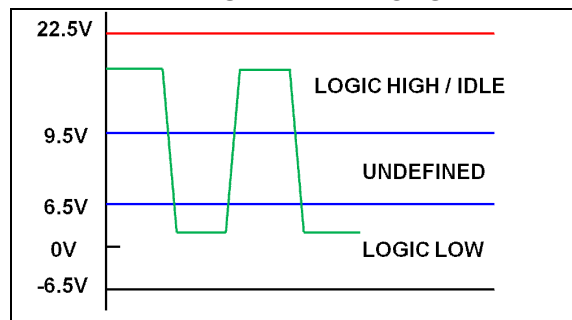
FIGURE 1: DALI FREE-FORM LAYOUT



Electrical Specifications

The physical low level or active state for DALI has been defined with the interface voltage of $< 9.5\text{V}$. The high-level condition, or DALI idle, is an interface voltage between 9.5V to 22.5V , most common being 16V . Maximum system current is limited to 250 mA . Response time of the current limiter circuit is $< 10\text{ }\mu\text{s}$. Each component connected to the interface may consume a maximum of 2 mA . Connectors are non-polarized at the receiver. DALI is usually optically isolated from the microcontroller and has a data transfer rate of $1200\text{ bits per second}$.

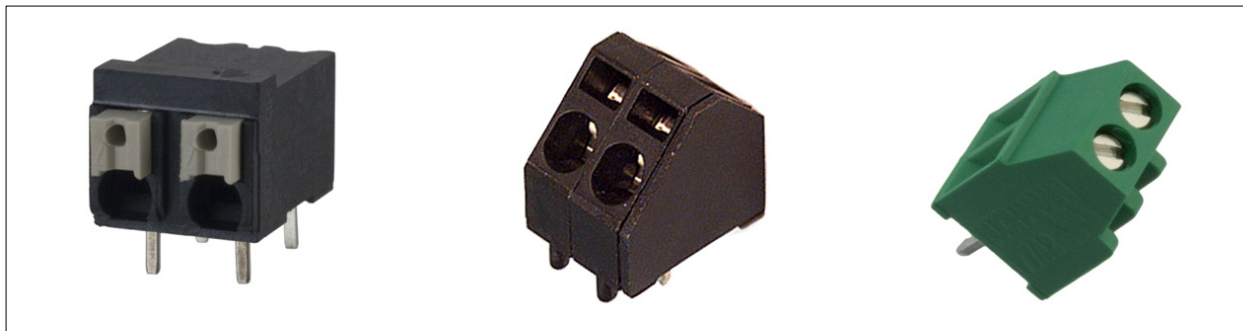
FIGURE 2: DALI ELECTRICAL SPECIFICATIONS



Connectors

There are no specific connectors dedicated for the DALI interface. Two-wire connectors with common screw terminals or push fit suffice ([Figure 3](#)).

FIGURE 3: TWO-WIRE CONNECTORS



Cabling

Due to the transmission rate, there is no need for special cables or wires. Two-wire standard electrical cables can get the job done. 18 AWG , class 1 or 2 cables (solid or stranded) are commonly used on many fixtures. They are often purple in color and usually rated 600V . A maximum voltage drop of up to 2V is allowed across the connecting wires from the interface supply to each system component. The maximum distance between two communicating units should be 300 meters (984 feet).

DALI CIRCUITS

There is no specification or recommendations on how to implement the circuit design for DALI. The following optically isolated circuit interfaces a PIC16F1947 to the DALI bus.

FIGURE 4: ISOLATED COMMUNICATIONS CIRCUIT

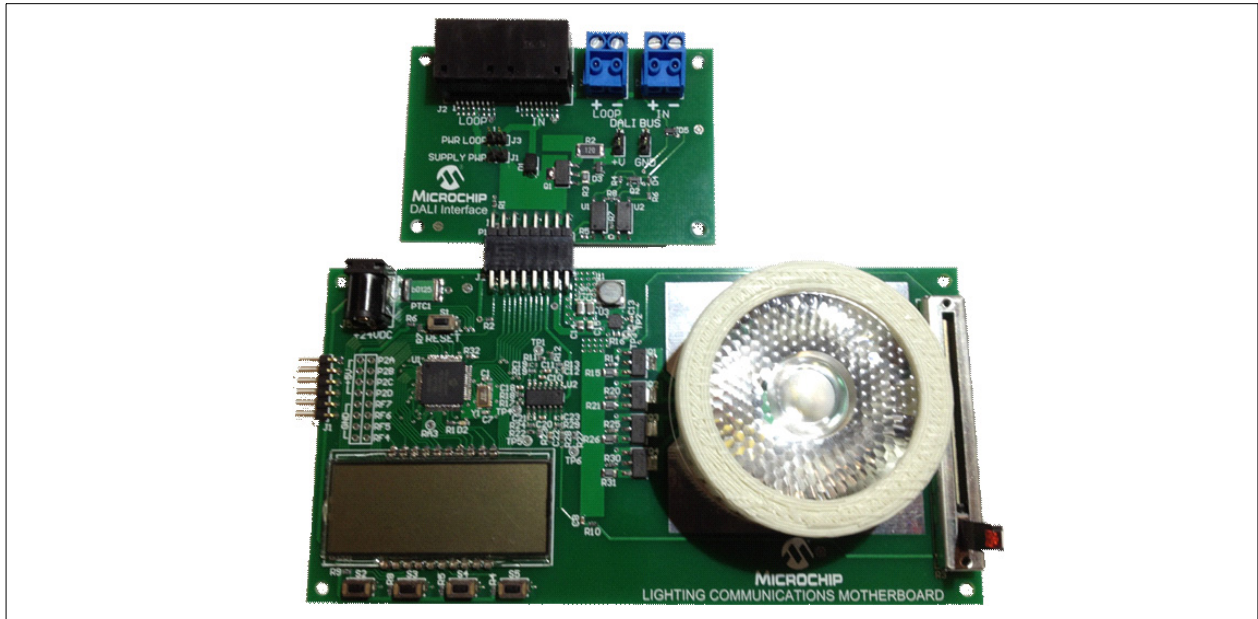
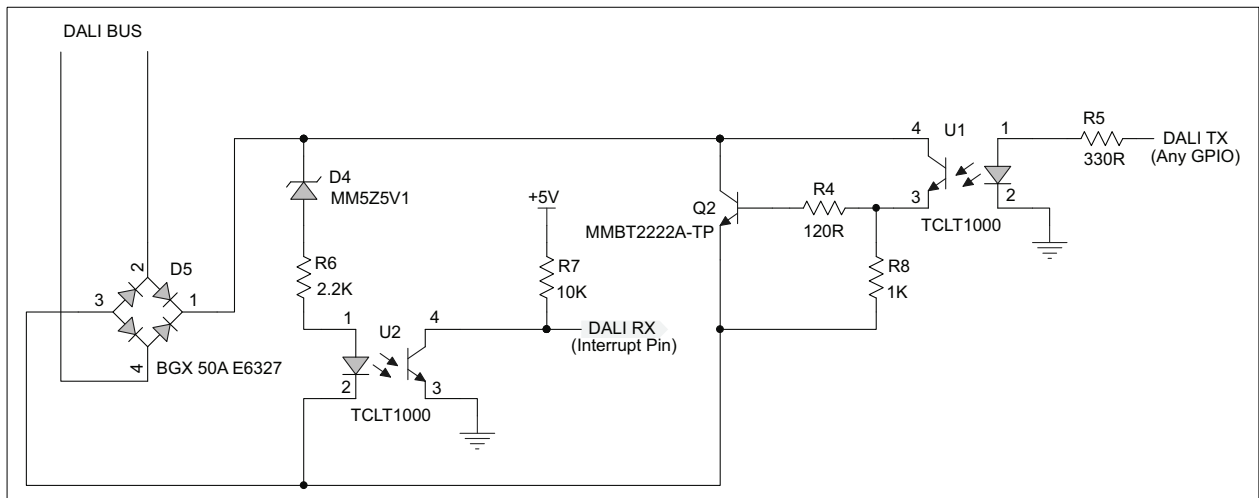


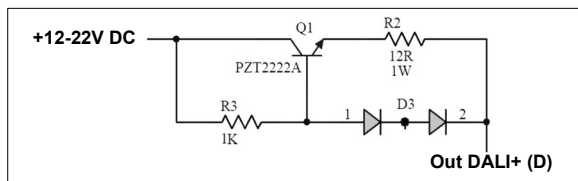
FIGURE 5: ISOLATED COMMUNICATIONS CIRCUIT DIAGRAM



DALI Power Supply Circuits

DALI power supply needs fast response time and efficient current limiting. This simple circuit works well.

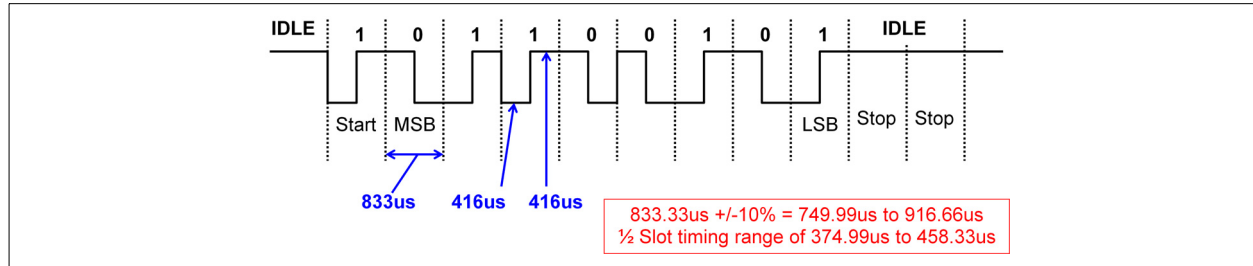
FIGURE 6: CIRCUIT



DALI Transmission

DALI uses Manchester (bi-phase) encoding to send the Start bit and the information bits. The information rate is 1200 bps with an acceptable range of $\pm 10\%$. One bit time is $833.33 \mu s$. The Most Significant bit (MSb) is sent out first (Figure 7).

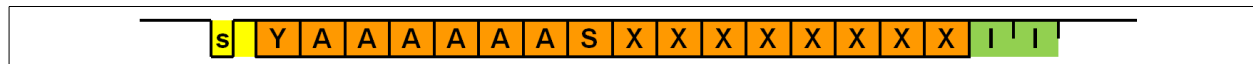
FIGURE 7: DALI TRANSMISSION



Forward Frame (control device → control gear)

Forward frame is the packet sent by the control device to the control gear. It consists of one Start bit, eight address bits, eight data bits and two Stop bits. The bits are sent MSb first.

FIGURE 8: FORWARD FRAME



s = Start bit which is a logical 1

YAAA AAAS = Address byte

XXXX XXXX = Data byte

I = Stop bit (Idle line)

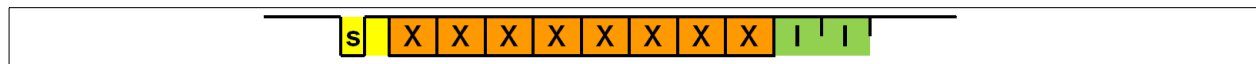
Addressing scheme for Address byte 'YAAA AAAS':

Y = 0 indicate individual or short address. Address byte for Short Address: 0AAA AAAS (0-63)
 Y = 1 indicate group address or broadcast. Address byte for group address: 100A AAAS (0-15)
 Address byte for broadcast: 1111 111S
 S = Selector bit:
 If '0' data byte = direct arc power level
 If '1' data byte = command
 Special Commands: 1010 0000 to 1111 1101

Backward Frame (control gear → control device)

Backward frame is the response packet sent by the control gear back to the control device. It consists of one Start bit, eight data bits and two Stop bits. The bits are sent MSb first.

FIGURE 9: BACKWARD FRAME



s = Start bit, which is a logical 1

XXXX XXXX = Data byte

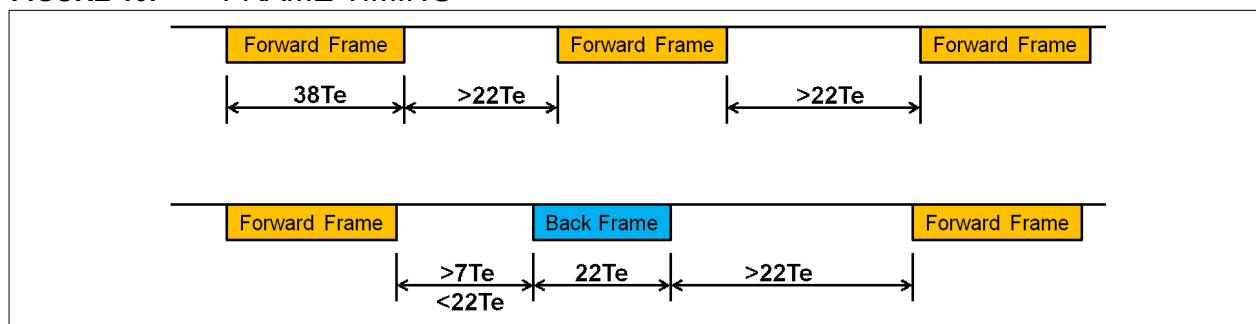
I = Stop bit (Idle line)

Backward frame data byte: In a response frame (Backward frame) '0xFF' is considered a 'Yes'. If a response is expected and the line stays Idle, response is considered a 'No' from the control gear. Other values vary depending on the command the control gear is responding to.

Timing

As mentioned previously, the bit transfer rate for DALI is 1200 bits per second with room for an error of $\pm 10\%$. 'Te' is used to indicate half-bit time, which is 416.67 μs . A forward packet lasts for 38 Te, which is equal to 15.83 ms. A backward frame takes 22 Te or 9.17 msec. The time between two consecutive forward frames is at least 22 Te. The time between forward frame and backward frame is greater than or equal to 7 Te, and less than or equal to 22 Te. The time between backward frame and forward frame is at least 22 Te.

FIGURE 10: FRAME TIMING



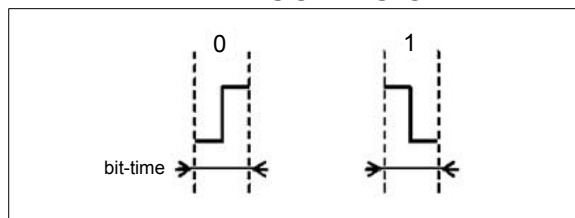
Manchester Encoding/Decoding

Any packet sent between the control device and control gear is a bi-phase Manchester encoded packet. The packet is then decoded, and the address and messages are then processed accordingly. Our lighting communication board has a PIC16F1947 microcontroller unit along with an isolated DALI communication circuit interface and a simple power supply. Please see [“Appendix A”](#) for the schematic details.

Since the signal from the DALI bus is inverted by the opto-coupler, the following explanation is how the PIC® microcontroller views the Manchester encoding/decoding.

The Manchester code is a digital encoding format in which symbol ‘1’ is represented by a falling edge (high followed by low), and symbol ‘0’ is represented by a rising edge (low followed by high). Both the high and low pulses have equal width, which is equal to half the bit period.

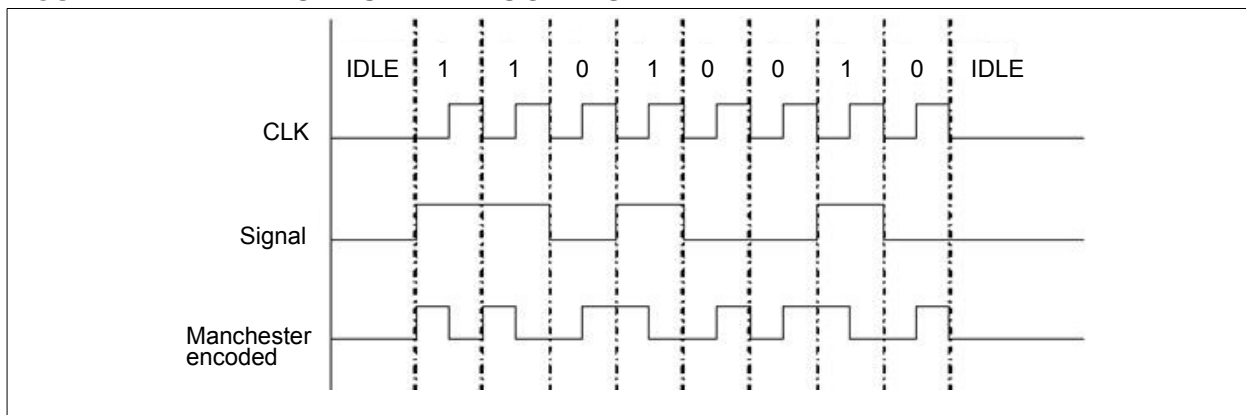
FIGURE 11: MANCHESTER ENCODING OF A BIT



Manchester Encoding

The outgoing message is encoded using Timer1, and the packet is sent out using the RC5 pin. An interrupt is generated using Timer1 every T_e , which is $416.67 \mu s$. T_e is the half-bit time, and this is where we want to change the phase of the signal. If we were sending out a ‘1’ as our bit, the first half is ‘1’ and at the interrupt the signal is reversed and vice versa. As a result, the output is a Manchester encoded packet, ready to be decoded by the control gear if sent by the control device, or decoded by the control device if sent as a response by the control gear back to the control device.

FIGURE 12: MANCHESTER ENCODING



Sample Code

EXAMPLE 1:

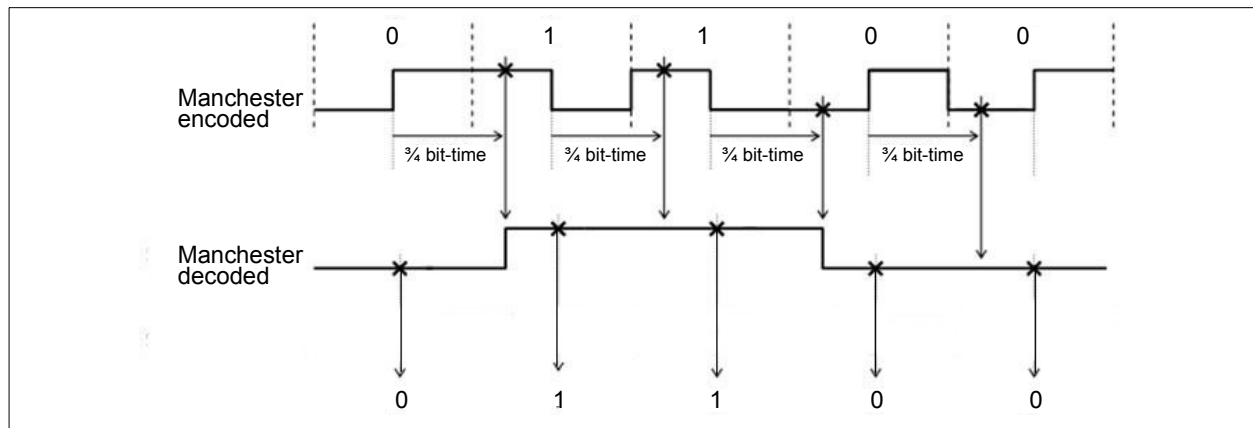
```
void TransmitFrame(void)
{
    static uint8_t bitcount = 0;
    if (TxFlag.TransmitMode && TE_TMR_INT_ENABLE)
    {
        switch (makeframe)
        {
            case start:
                .....
                .....
            break;
            case alldata:
                if (TxFlag.Secondhalf)
                {
                    DATA_OUT ^= 1;
                    TxFlag.Secondhalf = CLEAR;
                    bitcount++;
                    if (bitcount > 15)
                    {
                        makeframe=stop;
                        bitcount = 0;
                    }
                }
            else
            {
                if (FwdFrame.Word & 0x8000) DATA_OUT = DALI_LO;
                else DATA_OUT=DALI_HI;
                FwdFrame.Word <<= 1;
                TxFlag.Secondhalf = SET;
                makeframe=alldata;
            }
            break;
            case stop:
                .....
                .....
            break;
            .....
            .....
        }
    }
}
```

Manchester Decoding

Manchester decoding is more complicated than Manchester encoding. As the reception starts, the receiver, whether it be the control gear or the control device, makes sure the packet is received in its entirety starting with the Start bit, then an 8- or 16-bit message and, finally, at least two idles to indicate the Stop bit. The decoding is done using the external interrupt pin

RB0 on the PIC16F1947. This pin is specially used to generate an interrupt every time the phase of the incoming signal changes. Timer1 is used to generate interrupt every $\frac{3}{4}$ th of the bit, so the value is measured at that point, and that decides whether the bit is a '0' or a '1'. Timer1 is reset and reloaded in the middle of the bit when the external interrupt happens, and that keeps the error due to drifting in check.

FIGURE 13: MANCHESTER DECODING



Sample Code

EXAMPLE 2:

```

void ReceiveFrame(void)
{
    static uint16_t count = 0;
    static uint16_t HalfBitTime=0;
    static uint16_t LoadHalfBitTime=0;
    if (RxFlag.ReceiveMode)
    {
        switch (makeframe)
        {
            case start:
                .....
                .....
            break;
            case address:
                if (count <= 7)
                {
                    if (TE_TMR_INT_ENABLE && TE_TMR_INT_FLAG)
                    {
                        TE_TMR_INT_FLAG = CLEAR;
                        TE_TMR_ON=CLEAR;
                        receivebuff <<= 1;
                        if (DATA_IN_INT== DALI_LO)
                        {
                            SET_INT_FALLING_EDGE();
                            receivebuff |= 0x01;
                        }
                        else SET_INT_RISING_EDGE();

                        TE_TMR_INT_ENABLE = CLEAR;
                        TE_TMR_ON = CLEAR;
                        EDGE_INT_ENABLE= SET;

                    }
                    else if (EDGE_INT_ENABLE)
                    {
                        EDGE_INT_ENABLE = CLEAR;
                        TE_TMR_INT_ENABLE = SET;
                        TE_TMR_VALUE = TMRLoadVal;
                        TE_TMR_ON = SET;
                        count++;
                    }
                }
            else
            {
                RxFlag.Error = SET;
                RxFlag.ListenMode = SET;
                break;
            }
            if (count <= 7)
                makeframe = address;
            else
            {
                count = 0;
                makeframe = data;
                EDGE_INT_ENABLE = CLEAR;
                EDGE_INT_FLAG = CLEAR;
                TE_TMR_INT_ENABLE = SET;
                TE_TMR_VALUE = TMRLoadVal;
                TE_TMR_ON = SET;

                FwdFrame.Byte.Address = receivebuff;
                receivebuff = CLEAR;
            }
        }
        break;
        .....
        .....
    }
}

```

CONCLUSION

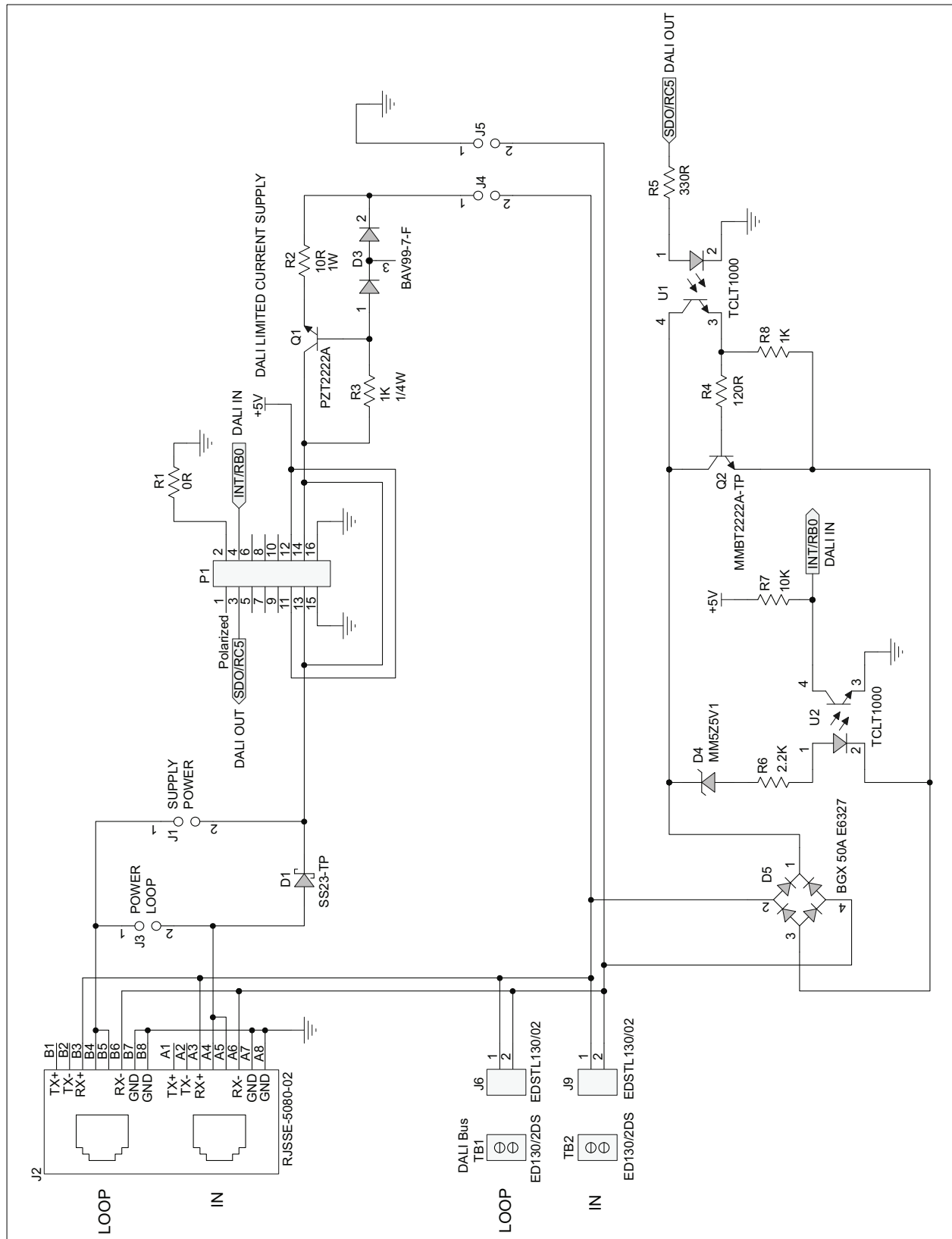
The DALI circuit with simple power supply and Manchester encoded/decoded communication implemented using PIC16F1947 along with the 'C' code, provides a solid foundation for implementing DALI commissioning and commands for both the control device, as well as the control gear.

REFERENCES:

- [1] International Standard CEI IEC 60929, Third edition 2006-01
- [2] International Standard IEC 62386-101, Edition 1.0 2009-06
- [3] International Standard IEC 62386-102, Edition 1.0 2009-06

APPENDIX A

FIGURE 14: DALI SCHEMATICS



NOTES:

Note the following details of the code protection feature on Microchip devices:

- Microchip products meet the specification contained in their particular Microchip Data Sheet.
- Microchip believes that its family of products is one of the most secure families of its kind on the market today, when used in the intended manner and under normal conditions.
- There are dishonest and possibly illegal methods used to breach the code protection feature. All of these methods, to our knowledge, require using the Microchip products in a manner outside the operating specifications contained in Microchip's Data Sheets. Most likely, the person doing so is engaged in theft of intellectual property.
- Microchip is willing to work with the customer who is concerned about the integrity of their code.
- Neither Microchip nor any other semiconductor manufacturer can guarantee the security of their code. Code protection does not mean that we are guaranteeing the product as "unbreakable."

Code protection is constantly evolving. We at Microchip are committed to continuously improving the code protection features of our products. Attempts to break Microchip's code protection feature may be a violation of the Digital Millennium Copyright Act. If such acts allow unauthorized access to your software or other copyrighted work, you may have a right to sue for relief under that Act.

Information contained in this publication regarding device applications and the like is provided only for your convenience and may be superseded by updates. It is your responsibility to ensure that your application meets with your specifications. MICROCHIP MAKES NO REPRESENTATIONS OR WARRANTIES OF ANY KIND WHETHER EXPRESS OR IMPLIED, WRITTEN OR ORAL, STATUTORY OR OTHERWISE, RELATED TO THE INFORMATION, INCLUDING BUT NOT LIMITED TO ITS CONDITION, QUALITY, PERFORMANCE, MERCHANTABILITY OR FITNESS FOR PURPOSE. Microchip disclaims all liability arising from this information and its use. Use of Microchip devices in life support and/or safety applications is entirely at the buyer's risk, and the buyer agrees to defend, indemnify and hold harmless Microchip from any and all damages, claims, suits, or expenses resulting from such use. No licenses are conveyed, implicitly or otherwise, under any Microchip intellectual property rights.

Trademarks

The Microchip name and logo, the Microchip logo, dsPIC, FlashFlex, KEELOQ, KEELOQ logo, MPLAB, PIC, PICmicro, PICSTART, PIC³² logo, rPIC, SST, SST Logo, SuperFlash and UNI/O are registered trademarks of Microchip Technology Incorporated in the U.S.A. and other countries.

FilterLab, Hampshire, HI-TECH C, Linear Active Thermistor, MTP, SEEVAL and The Embedded Control Solutions Company are registered trademarks of Microchip Technology Incorporated in the U.S.A.

Silicon Storage Technology is a registered trademark of Microchip Technology Inc. in other countries.

Analog-for-the-Digital Age, Application Maestro, BodyCom, chipKIT, chipKIT logo, CodeGuard, dsPICDEM, dsPICDEM.net, dsPICworks, dsSPEAK, ECAN, ECONOMONITOR, FanSense, HI-TIDE, In-Circuit Serial Programming, ICSP, Mindi, MiWi, MPASM, MPF, MPLAB Certified logo, MPLIB, MPLINK, mTouch, Omniclient Code Generation, PICC, PICC-18, PICDEM, PICDEM.net, PICkit, PICTail, REAL ICE, rLAB, Select Mode, SQL, Serial Quad I/O, Total Endurance, TSHARC, UniWinDriver, WiperLock, ZENA and Z-Scale are trademarks of Microchip Technology Incorporated in the U.S.A. and other countries.

SQTP is a service mark of Microchip Technology Incorporated in the U.S.A.

GestIC and ULPP are registered trademarks of Microchip Technology Germany II GmbH & Co. & KG, a subsidiary of Microchip Technology Inc., in other countries.

All other trademarks mentioned herein are property of their respective companies.

© 2012, Microchip Technology Incorporated, Printed in the U.S.A., All Rights Reserved.



Printed on recycled paper.

ISBN: 9781620765715

QUALITY MANAGEMENT SYSTEM
CERTIFIED BY DNV
== ISO/TS 16949 ==

Microchip received ISO/TS-16949:2009 certification for its worldwide headquarters, design and wafer fabrication facilities in Chandler and Tempe, Arizona; Gresham, Oregon and design centers in California and India. The Company's quality system processes and procedures are for its PIC® MCUs and dsPIC® DSCs, KEELOQ® code hopping devices, Serial EEPROMs, microperipherals, nonvolatile memory and analog products. In addition, Microchip's quality system for the design and manufacture of development systems is ISO 9001:2000 certified.

Worldwide Sales and Service

AMERICAS

Corporate Office
2355 West Chandler Blvd.
Chandler, AZ 85224-6199
Tel: 480-792-7200
Fax: 480-792-7277
Technical Support:
<http://www.microchip.com/support>
Web Address:
www.microchip.com

Atlanta
Duluth, GA
Tel: 678-957-9614
Fax: 678-957-1455

Boston
Westborough, MA
Tel: 774-760-0087
Fax: 774-760-0088

Chicago
Itasca, IL
Tel: 630-285-0071
Fax: 630-285-0075

Cleveland
Independence, OH
Tel: 216-447-0464
Fax: 216-447-0643

Dallas
Addison, TX
Tel: 972-818-7423
Fax: 972-818-2924

Detroit
Farmington Hills, MI
Tel: 248-538-2250
Fax: 248-538-2260

Indianapolis
Noblesville, IN
Tel: 317-773-8323
Fax: 317-773-5453

Los Angeles
Mission Viejo, CA
Tel: 949-462-9523
Fax: 949-462-9608

Santa Clara
Santa Clara, CA
Tel: 408-961-6444
Fax: 408-961-6445

Toronto
Mississauga, Ontario,
Canada
Tel: 905-673-0699
Fax: 905-673-6509

ASIA/PACIFIC

Asia Pacific Office
Suites 3707-14, 37th Floor
Tower 6, The Gateway
Harbour City, Kowloon
Hong Kong
Tel: 852-2401-1200
Fax: 852-2401-3431

Australia - Sydney
Tel: 61-2-9868-6733
Fax: 61-2-9868-6755

China - Beijing
Tel: 86-10-8569-7000
Fax: 86-10-8528-2104

China - Chengdu
Tel: 86-28-8665-5511
Fax: 86-28-8665-7889

China - Chongqing
Tel: 86-23-8980-9588
Fax: 86-23-8980-9500

China - Hangzhou
Tel: 86-571-2819-3187
Fax: 86-571-2819-3189

China - Hong Kong SAR
Tel: 852-2401-1200
Fax: 852-2401-3431

China - Nanjing
Tel: 86-25-8473-2460
Fax: 86-25-8473-2470

China - Qingdao
Tel: 86-532-8502-7355
Fax: 86-532-8502-7205

China - Shanghai
Tel: 86-21-5407-5533
Fax: 86-21-5407-5066

China - Shenyang
Tel: 86-24-2334-2829
Fax: 86-24-2334-2393

China - Shenzhen
Tel: 86-755-8203-2660
Fax: 86-755-8203-1760

China - Wuhan
Tel: 86-27-5980-5300
Fax: 86-27-5980-5118

China - Xian
Tel: 86-29-8833-7252
Fax: 86-29-8833-7256

China - Xiamen
Tel: 86-592-2388138
Fax: 86-592-2388130

China - Zhuhai
Tel: 86-756-3210040
Fax: 86-756-3210049

ASIA/PACIFIC

India - Bangalore
Tel: 91-80-3090-4444
Fax: 91-80-3090-4123

India - New Delhi
Tel: 91-11-4160-8631
Fax: 91-11-4160-8632

India - Pune
Tel: 91-20-2566-1512
Fax: 91-20-2566-1513

Japan - Osaka
Tel: 81-66-152-7160
Fax: 81-66-152-9310

Japan - Yokohama
Tel: 81-45-471-6166
Fax: 81-45-471-6122

Korea - Daegu
Tel: 82-53-744-4301
Fax: 82-53-744-4302

Korea - Seoul
Tel: 82-2-554-7200
Fax: 82-2-558-5932 or
82-2-558-5934

Malaysia - Kuala Lumpur
Tel: 60-3-6201-9857
Fax: 60-3-6201-9859

Malaysia - Penang
Tel: 60-4-227-8870
Fax: 60-4-227-4068

Philippines - Manila
Tel: 63-2-634-9065
Fax: 63-2-634-9069

Singapore
Tel: 65-6334-8870
Fax: 65-6334-8850

Taiwan - Hsin Chu
Tel: 886-3-5778-366
Fax: 886-3-5770-955

Taiwan - Kaohsiung
Tel: 886-7-536-4818
Fax: 886-7-330-9305

Taiwan - Taipei
Tel: 886-2-2500-6610
Fax: 886-2-2508-0102

Thailand - Bangkok
Tel: 66-2-694-1351
Fax: 66-2-694-1350

EUROPE

Austria - Wels
Tel: 43-7242-2244-39
Fax: 43-7242-2244-393

Denmark - Copenhagen
Tel: 45-4450-2828
Fax: 45-4485-2829

France - Paris
Tel: 33-1-69-53-63-20
Fax: 33-1-69-30-90-79

Germany - Munich
Tel: 49-89-627-144-0
Fax: 49-89-627-144-44

Italy - Milan
Tel: 39-0331-742611
Fax: 39-0331-466781

Netherlands - Drunen
Tel: 31-416-690399
Fax: 31-416-690340

Spain - Madrid
Tel: 34-91-708-08-90
Fax: 34-91-708-08-91

UK - Wokingham
Tel: 44-118-921-5869
Fax: 44-118-921-5820