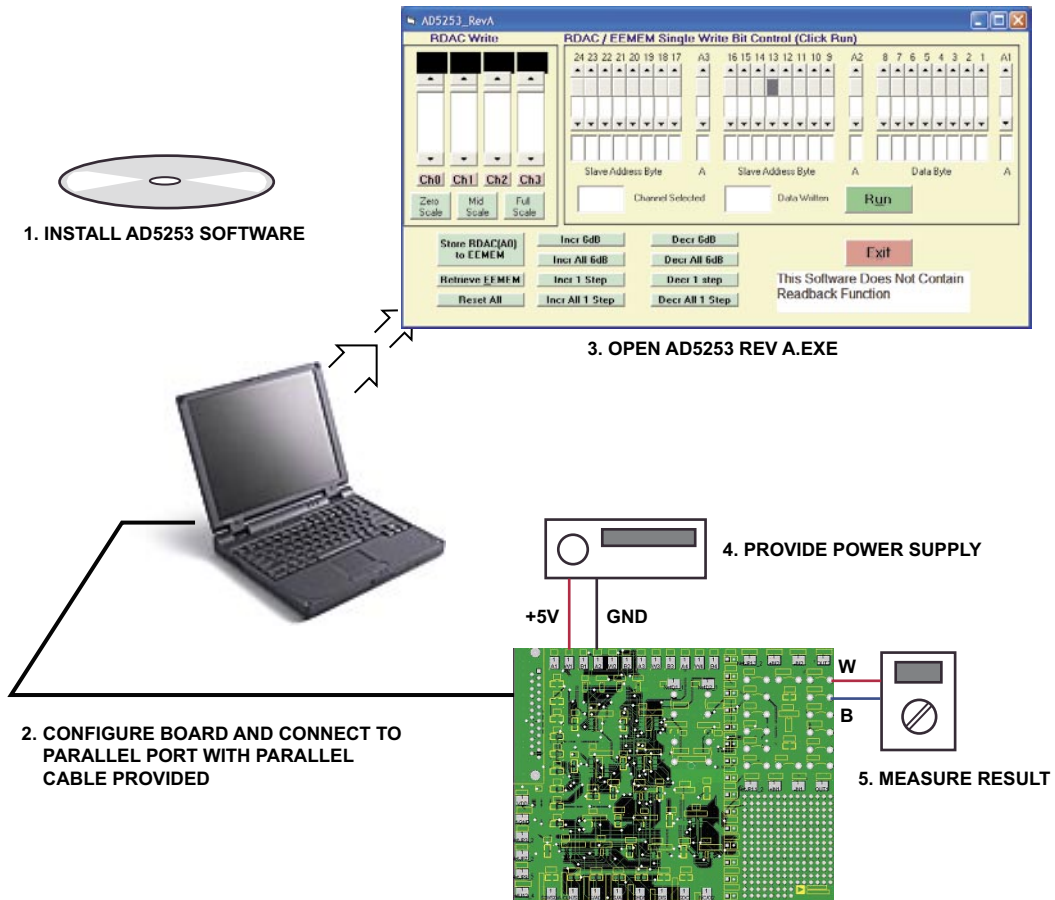


Evaluation Kit for the AD5253 64-Position I²C-Compatible Nonvolatile Memory Digital Potentiometer

by Alan Li

5 STEPS TO SET UP THE EVALUATION KIT



NO PROGRAMMING SKILLS REQUIRED!

Figure 1. Evaluation Kit Setup

AN-728

OPERATING THE AD5253 EVALUATION KIT

1. Click the Install Software link in the digital POT CD browser.
2. Configure the board. A 2-channel op amp (AD822B) and 2.5 V reference (ADR03) are provided for your convenience (see Configuring Other Components section).
3. Apply a separate power supply.
4. Connect the board to the parallel port with the parallel cable provided.
5. Open the AD5253 Rev A program from the Windows® Start program. Move the scroll bar to program the resistance settings. The operation is self-explanatory.

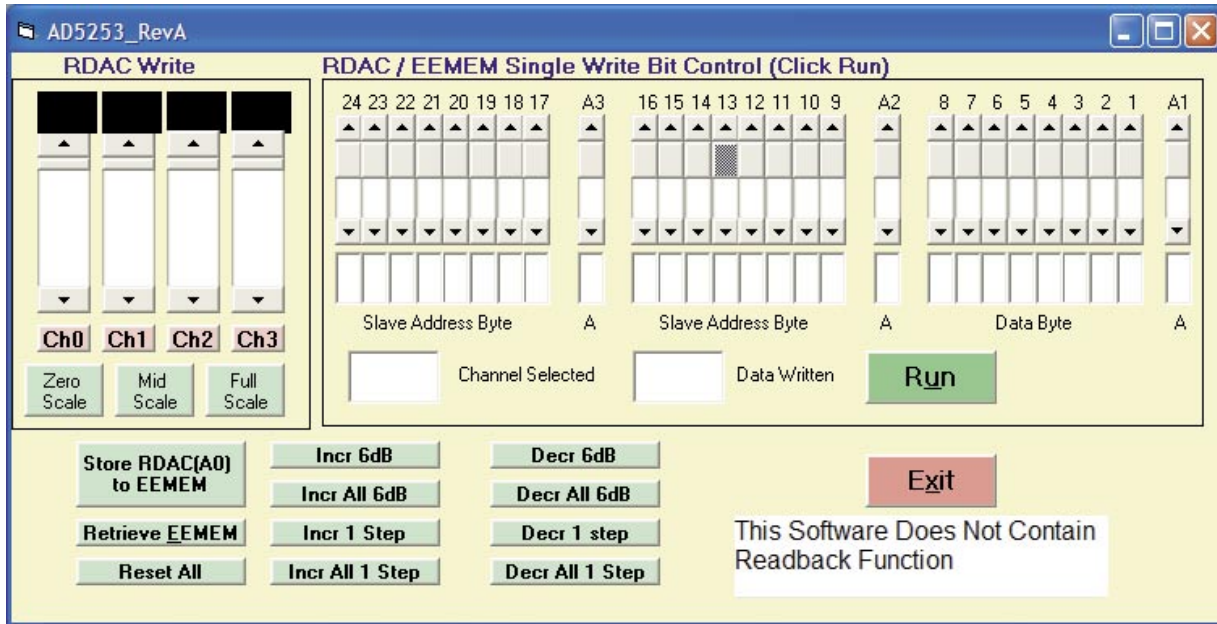
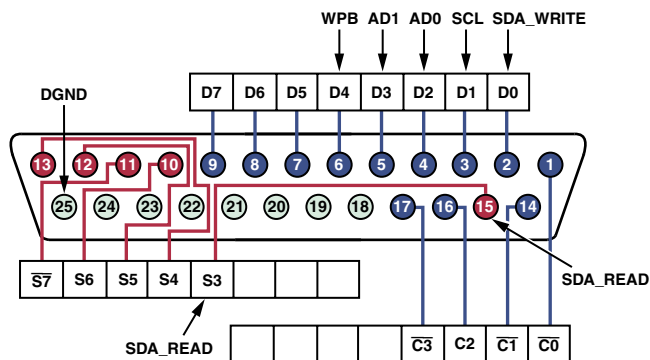


Figure 2. AD5253 Software Graphical Interface

AD5253 PARALLEL PORT CONNECTION

(For Visual Basic Program Developers Only)



8 OUTPUT PINS ACCESSED VIA THE DATA PORT
 5 INPUT PINS (ONE INVERTED) ACCESSED VIA THE STATUS PORT
 4 OUTPUT PINS (THREE INVERTED) ACCESSED VIA THE CONTROL PORT
 THE REMAINING 8 PINS ARE GROUNDED

PORTID = VAL("&H" + "378") [378h = 888]
 PORTID = VAL("&H" + "379") [379h = 889]
 PORTID = VAL("&H" + "37A") [37Ah = 890]

Figure 3. Parallel Port Connector Configuration (for VB Program Developers Only)

TIMING DEFINITION

(In Visual Basic Source Code cmdRUN)

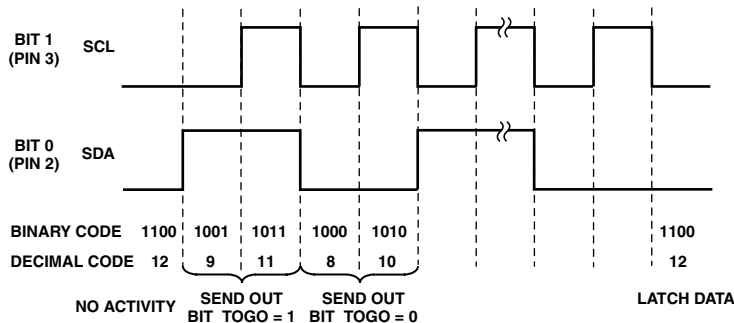


Figure 4. Timing Definition (for VB Program Developers Only)

Purchase of licensed I²C components of Analog Devices or one of its sublicensed Associated Companies conveys a license for the purchaser under the Philips I²C Patent Rights to use these components in an I²C system, provided that the system conforms to the I²C Standard Specification as defined by Philips.

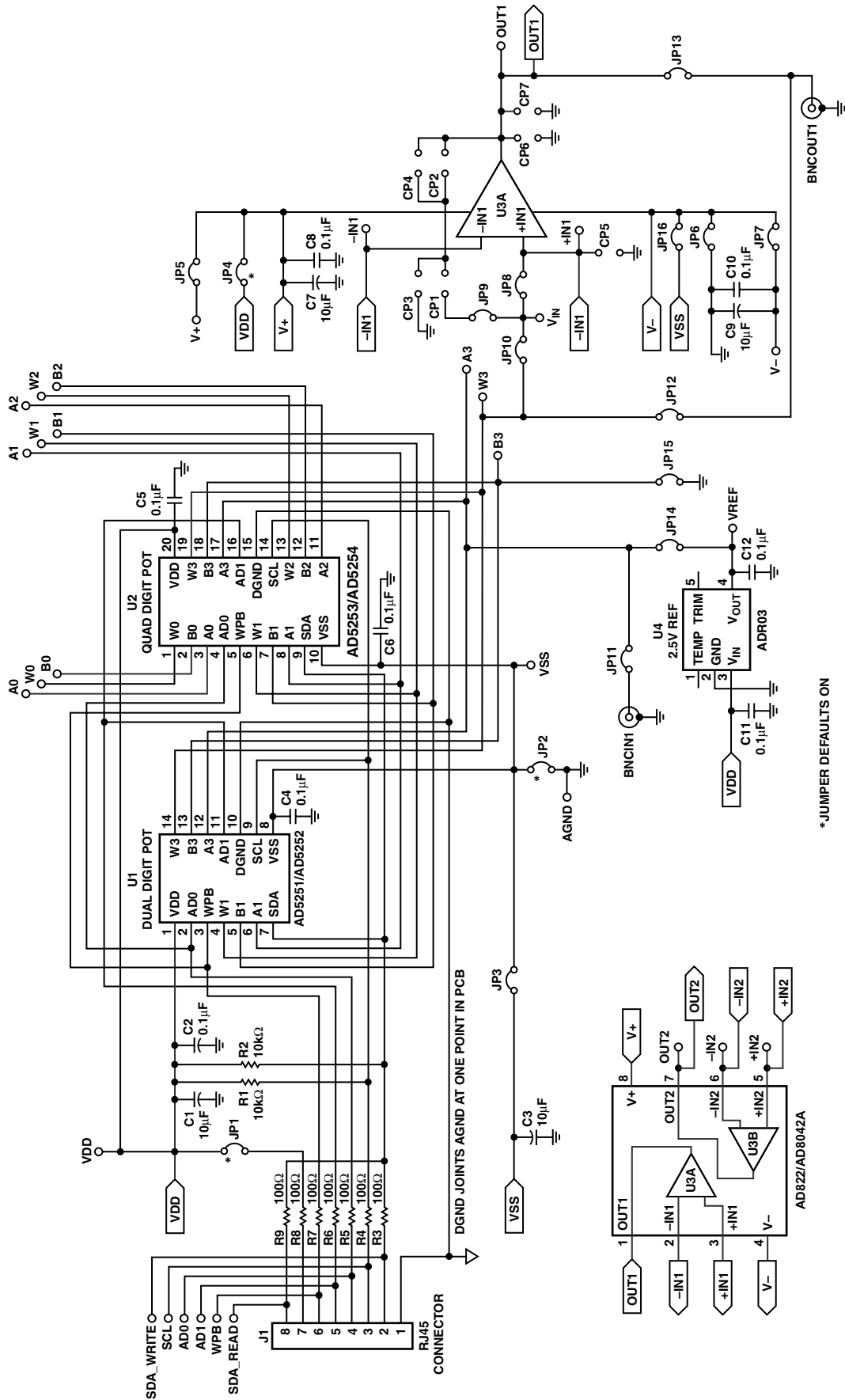


Figure 5. Evaluation Board Schematic

© 2005 Analog Devices, Inc. All rights reserved. Trademarks and registered trademarks are the property of their respective owners.